






# PES200

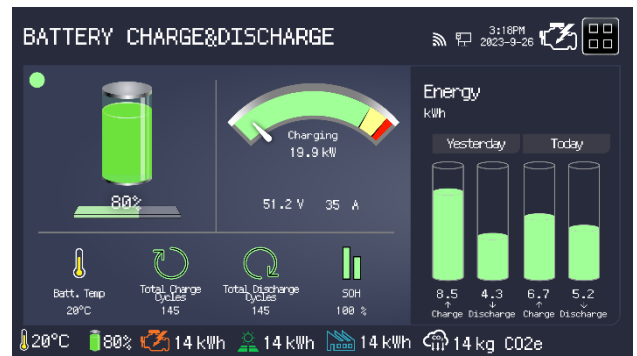
PORTABLE ENERGY STORAGE SYSTEM

## SPECIFICATION

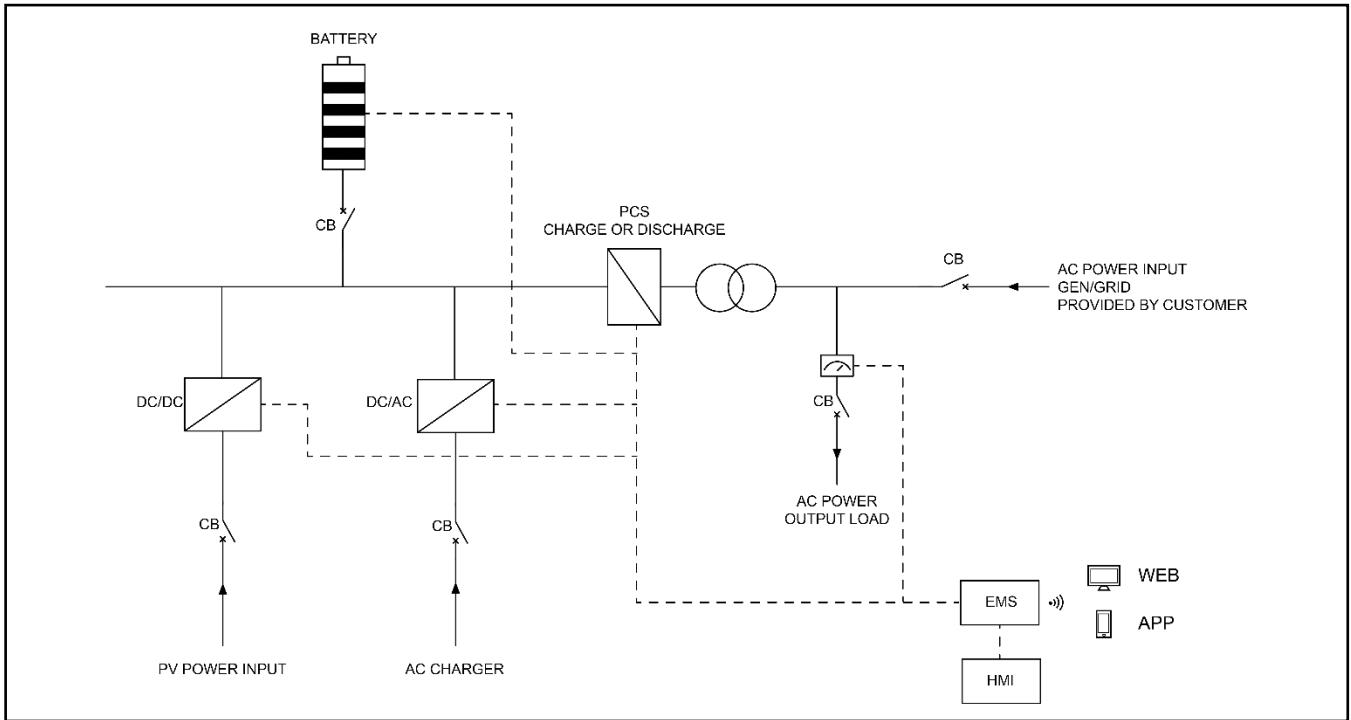


| PES200 Portable Energy Storage System |        |  |  |   |
|---------------------------------------|--------|--|--|---|
| Item                                  | Unit   | Data   |  |   |
| Output power                          | kVA/kW | 200/200  |  |   |
| Frequency                             | Hz     | 50   |  |   |
| Phase                                 | P      | 3  |  |   |
| Power factor                          | PF     | 1  |  |   |
| Dimensions                            | mm     | 3840×2290×2525   |  |   |
| Dry weight                            | kg     | 5200   |  |   |
| 40" Loading                           | Qty    | 3  |  |   |
| Protection class                      |        | IP54   |  |   |
| Noise level                           | dBA@7m | 58   |  |   |
| Voltage                               | AC V   | 380  | 400  | 415   |
| Current                               | A      | 304  | 289  | 278   |
| Wiring port                           |        | L1、L2、L3、N、PE  |  |   |
| Voltage regulation range              |        | ±1%  |  |   |
| Load adaptation characteristics       |        | Inductive load, resistive load   |  |   |
| Power connection input                |        | AC socket: 3P/4W, 1x200kW, 1x50kW<br>DC socket: 1x50kW   |  |   |
| Power connection output               |        | AC socket: 3P/4W, 1x200kW<br>AC socket: 1P   |  |   |
| Certification standards               |        | <br><br><br><br> | UN 38.3<br>IEC 62619<br>IEC 62477<br>IEC 62933-2-1<br>CE Declaration of Conformity<br>VDE-AR-N 4110<br>EN-50549-1<br>UL 1973 | <div style="border: 2px solid red; padding: 5px; color: red; font-weight: bold;">Classified Document</div> <div style="border: 2px solid red; padding: 5px; color: red; font-weight: bold;">2024.05</div> |

## Intelligent Energy Management



## System Working Principle



| DC/AC System             |        |                                  |
|--------------------------|--------|----------------------------------|
| Rated power              | kVA/kW | 200/200                          |
| Output voltage           | AC V   | 415/240                          |
| Overload capability      |        | 110% last 10mins, 115% last 1min |
| Standby AC charger power | kW     | 50                               |

| PV SYSTEM                        |      |         |
|----------------------------------|------|---------|
| Rated power                      | kWp  | 50      |
| Input voltage                    | DC V | 150-650 |
| NOTE: Solar panels are optional. |      |         |

| Battery System       |      |                         |
|----------------------|------|-------------------------|
| Battery type         |      | LiFePO4                 |
| Battery capacity     | kWh  | 230                     |
| Rated voltage        | DC V | 768                     |
| Cooling system       |      | Air-cooled              |
| Max charging rate    |      | 1C                      |
| Max discharging rate |      | 1C                      |
| Battery cycle life   |      | >8000cycles(90%DOD, 1C) |

| CONTROL SYSTEM          |      |                 |
|-------------------------|------|-----------------|
| HMI control panel       | inch | 13" Touchscreen |
| Communication interface |      | WAN/WIFI/SIM    |
| Cloud services          |      | APP/WEB         |

\* Data is subject to change without prior notice as new products are always developed.  
Please contact POWERLINK or local agent with any doubts or for more information.

Classified  
Document  
2024.05